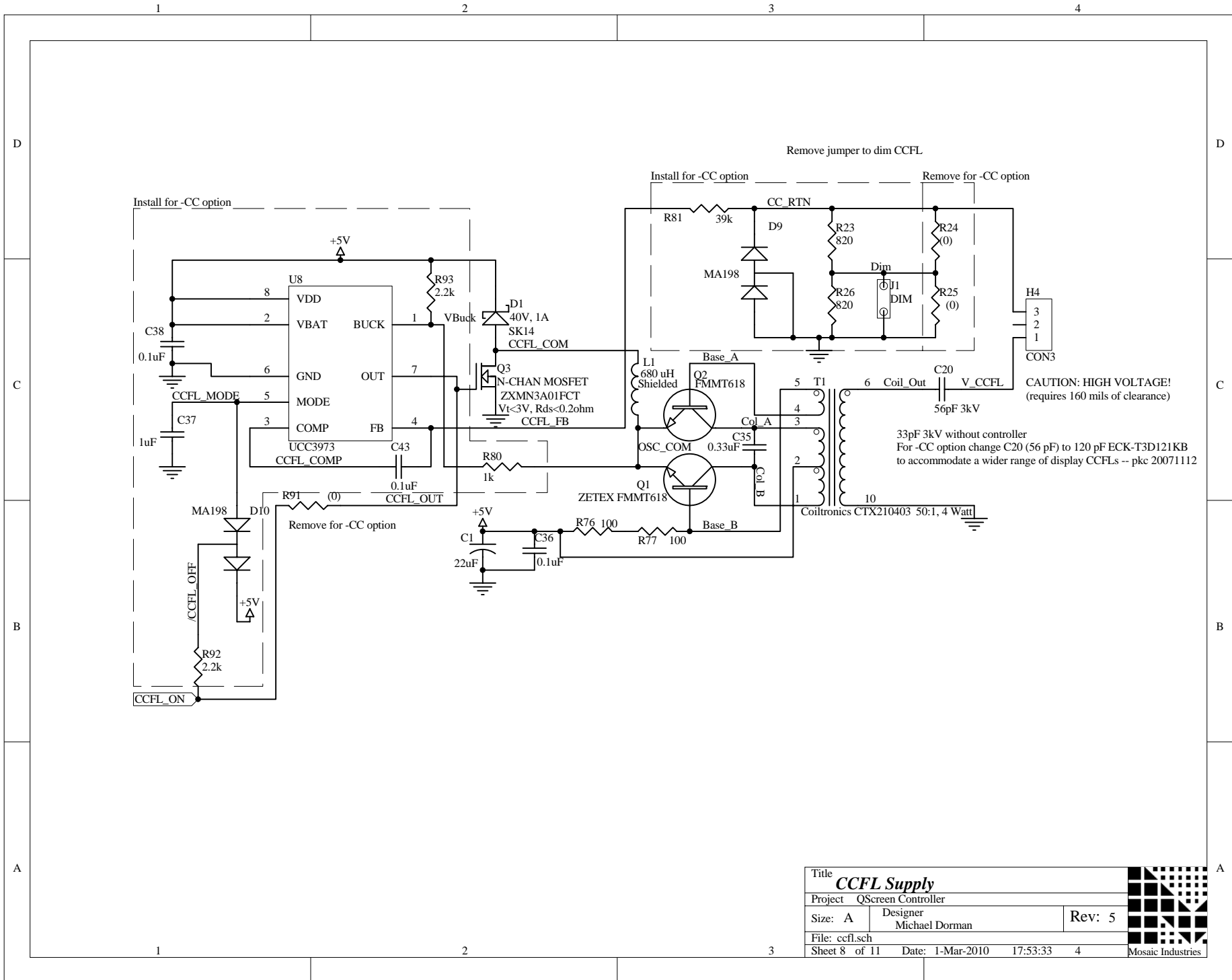

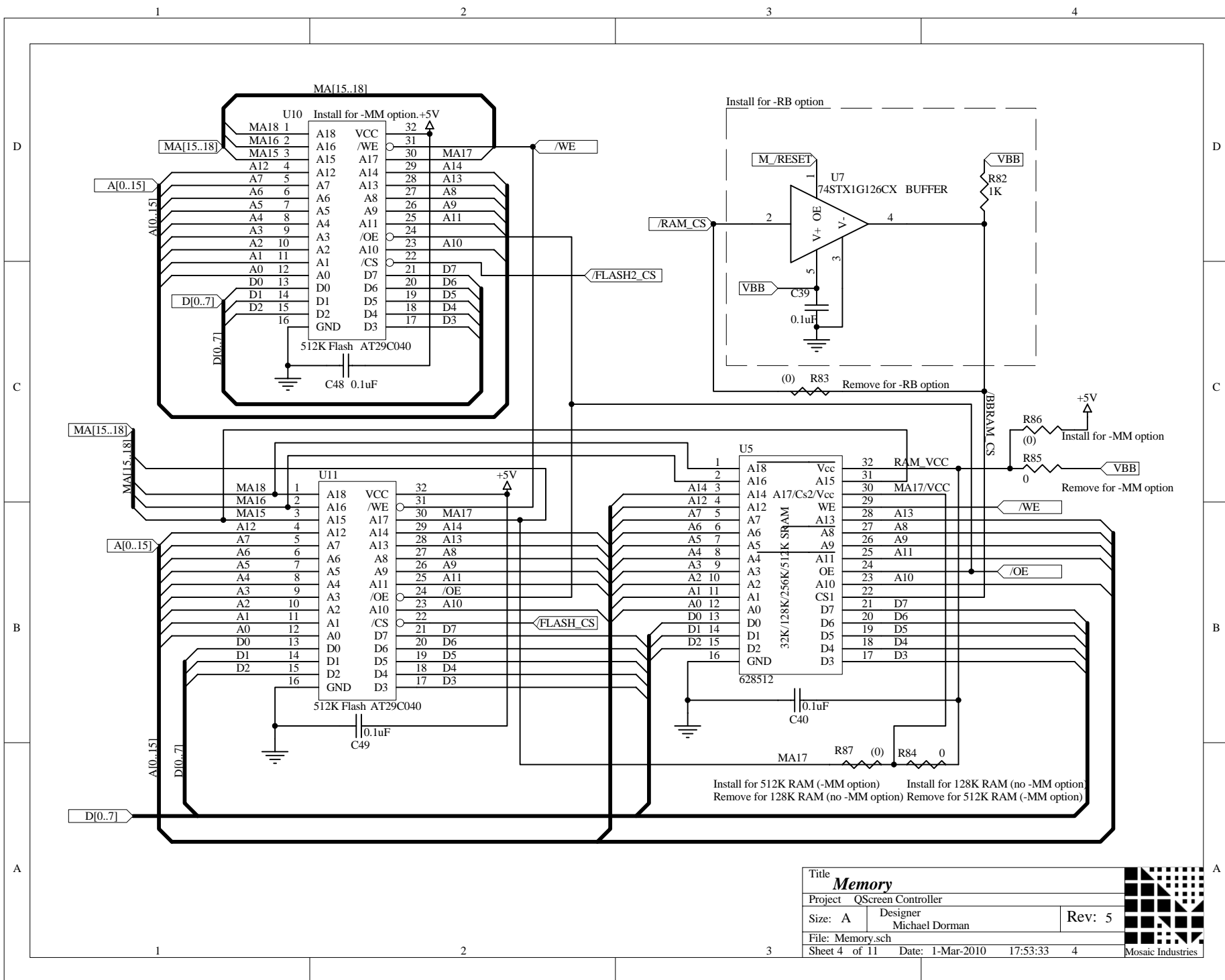


Title <b>Intrinsic Safety Barrier</b>			
Project: QScreen Controller			
Size: A	Designer Michael Dorman	Rev: 5	
File: barrier.sch			
Sheet 10 of 11	Date: 1-Mar-2010	17:53:33	6 Mosaic Industries



Title		
Project		
Size: A	Designer	
File: ccfl.sch	Rev: 5	
Sheet 8 of 11	Date: 1-Mar-2010 17:53:33 4	



Title <b>Memory</b>			
Project QScreen Controller			
Size: A	Designer Michael Dorman	Rev: 5	
File: Memory.sch			
Sheet 4 of 11	Date: 1-Mar-2010 17:53:33	4	

1 2 3 4 5 6

D

D

C

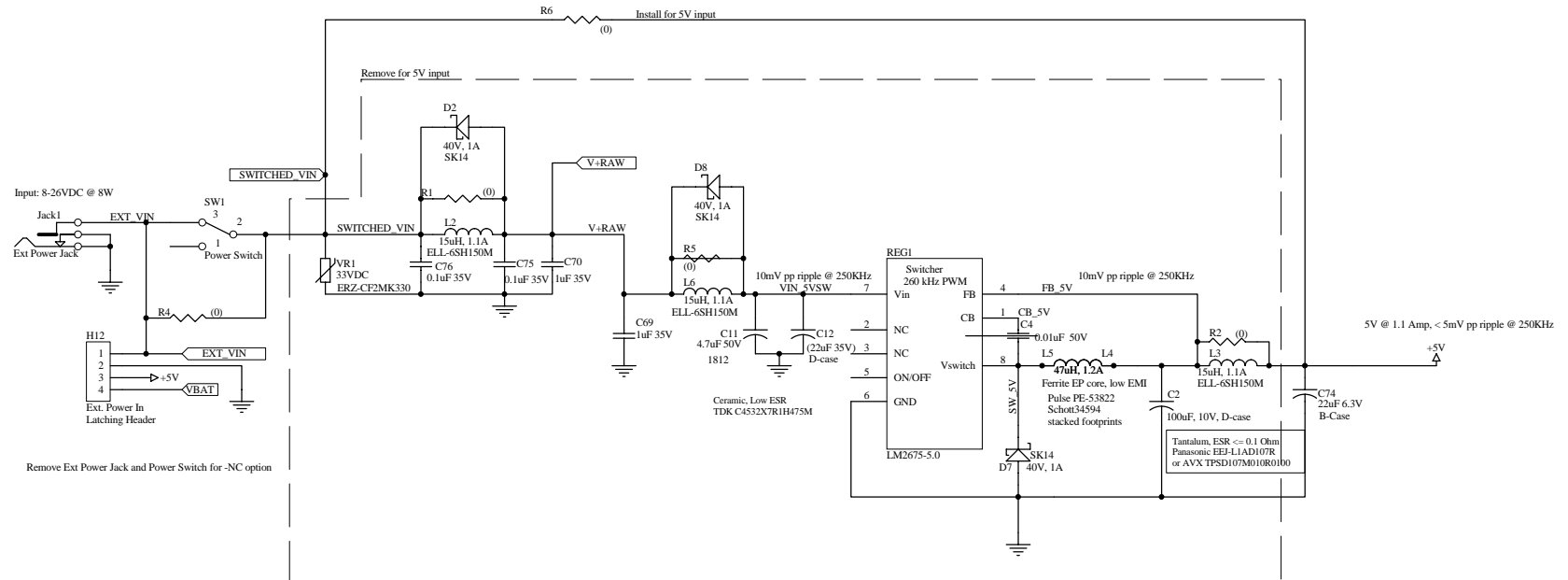
C

B

B

A

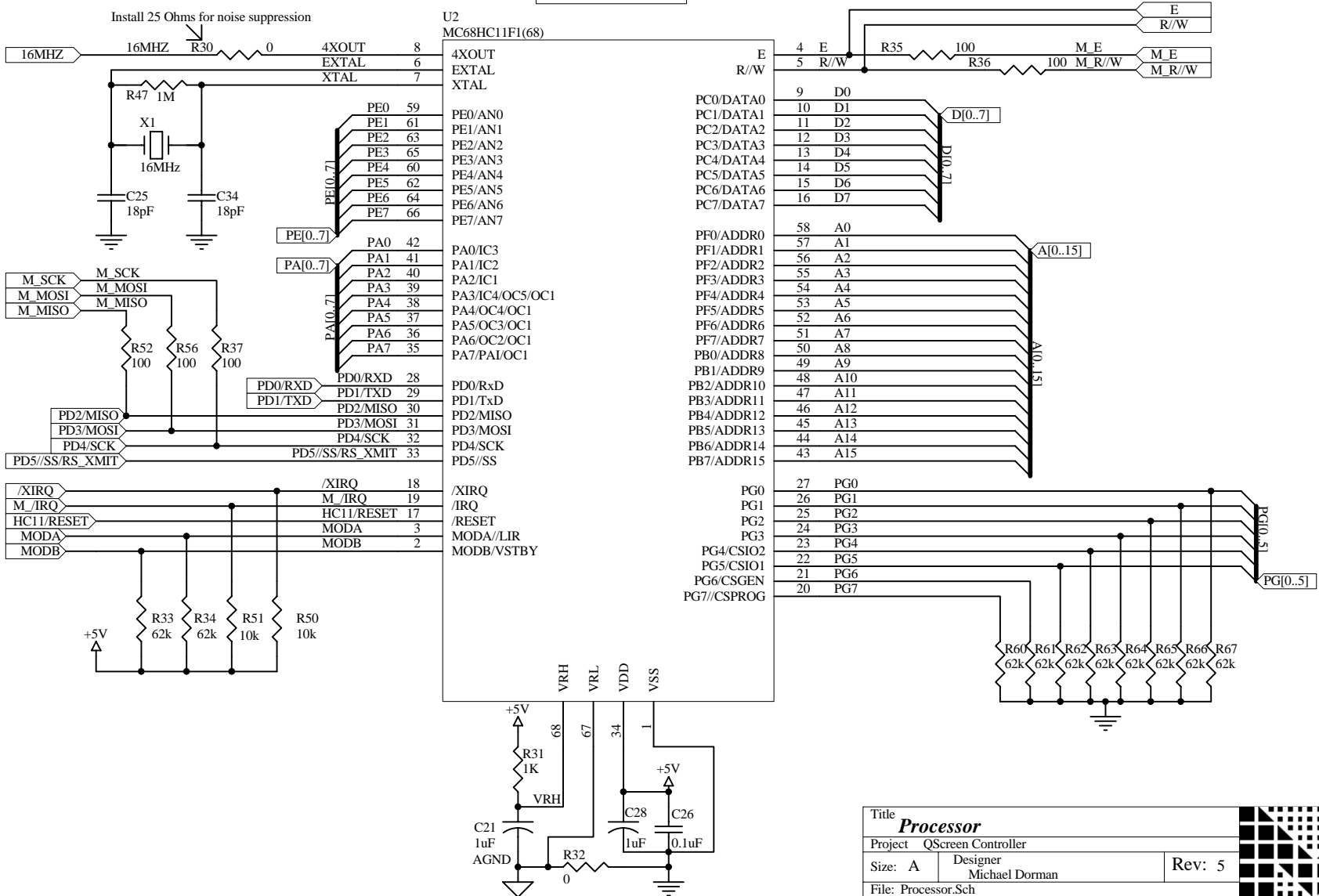
A



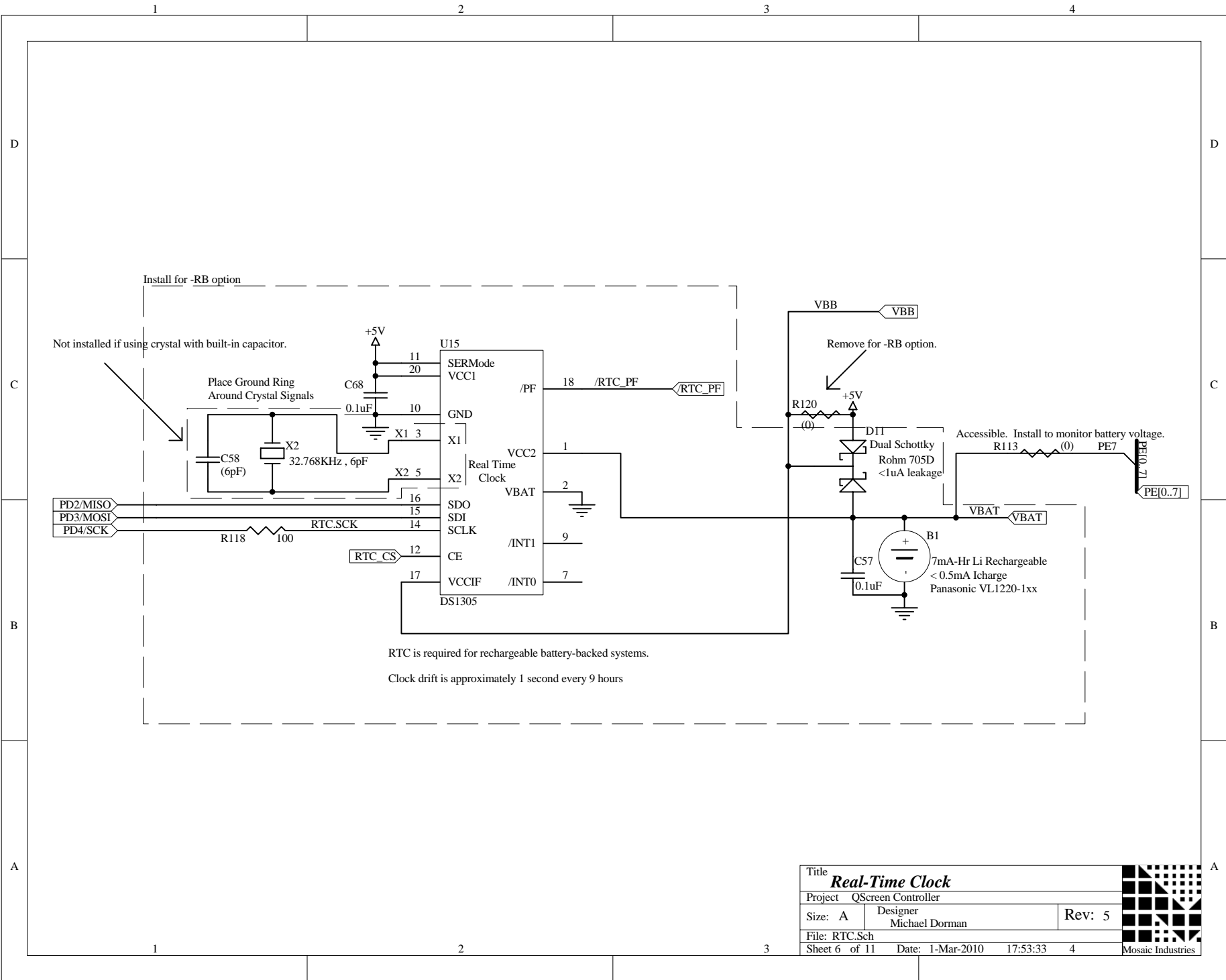
1 2 3 4 5 6


Title <b>Power</b>			
Project QScreen Controller			
Size: A	Designer Michael Dorman		Rev: 5
File: power.sch			Date: 1-Mar-2010 17:53:33
Sheet 7 of 11		6 Mosaic Industries	

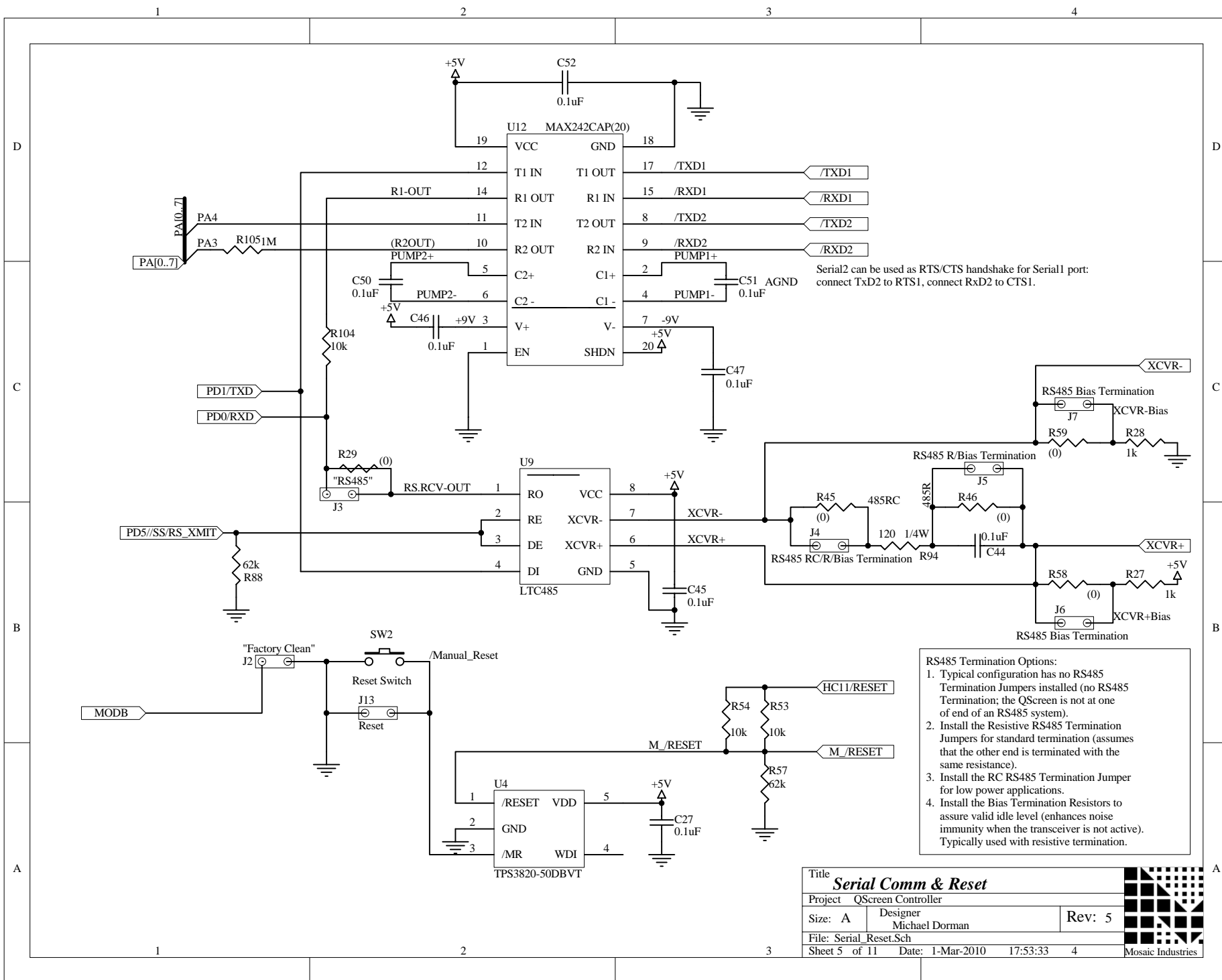
PA3 & PA4 also implement #2 RS232



Title			
Processor			
Project QScreen Controller			
Size: A	Designer Michael Dorman		Rev: 5
File: Processor.Sch			
Sheet 1 of 11	Date: 1-Mar-2010 17:53:33	4	
		Mosaic Industries	

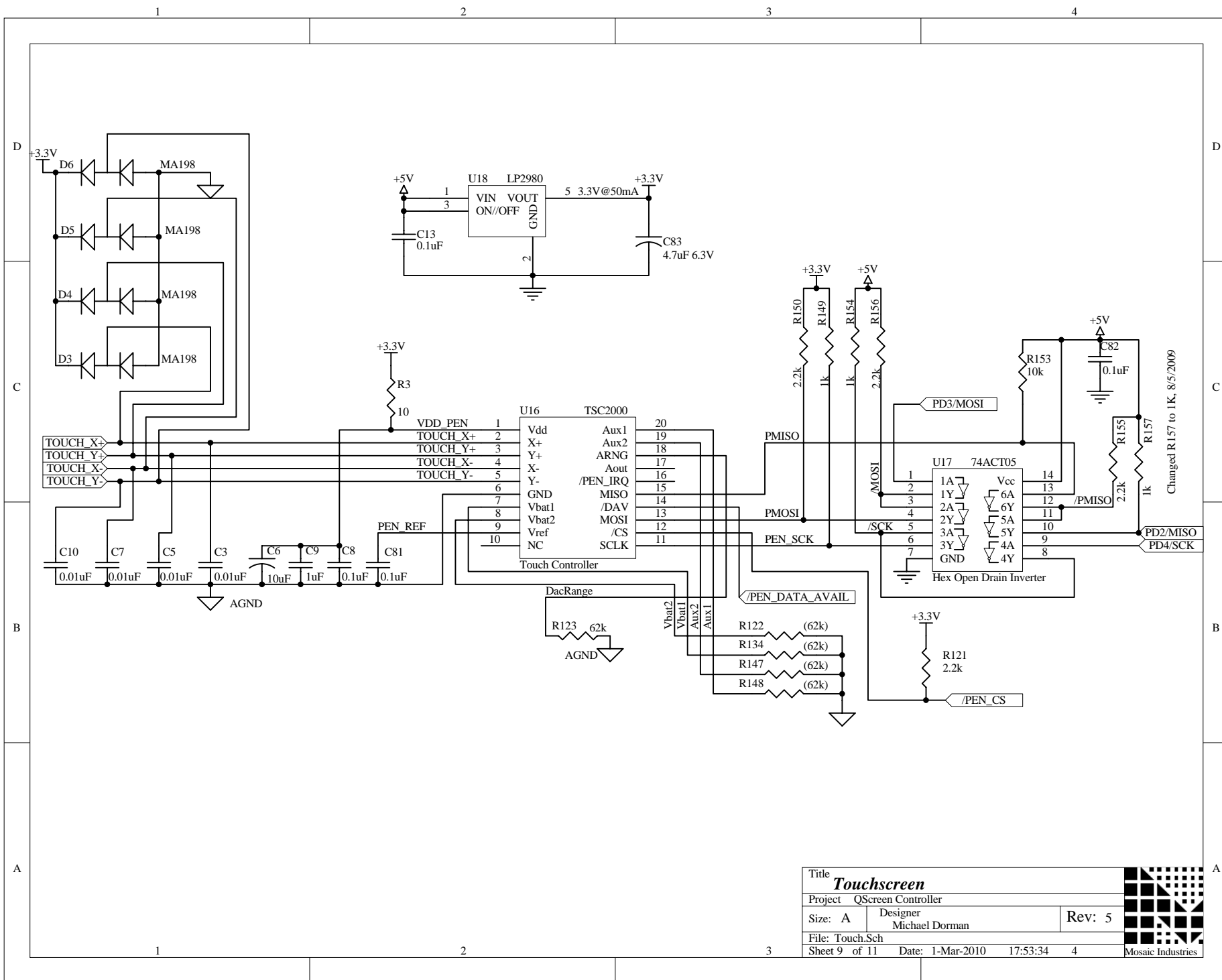


Title		
Project		
Size: A	Designer	
File: RTC.Sch	Rev: 5	
Sheet 6 of 11	Date: 1-Mar-2010 17:53:33 4	
Mosaic Industries		



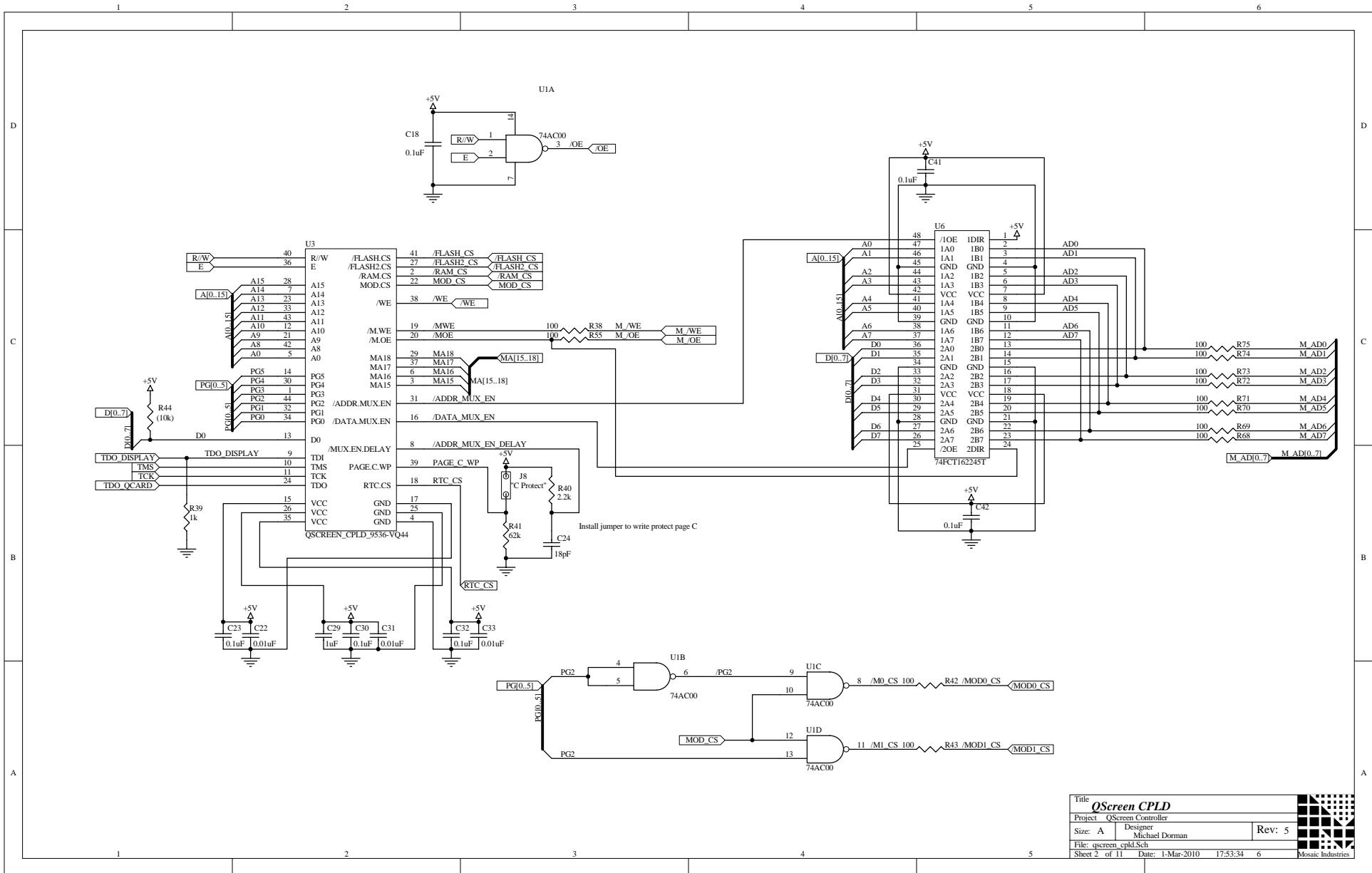
Title <b>Serial Comm &amp; Reset</b>		
Project QScreen Controller		
Size: A	Designer Michael Dorman	Rev: 5
File: Serial_Reset.Sch		
Sheet 5 of 11	Date: 1-Mar-2010 17:53:33	4

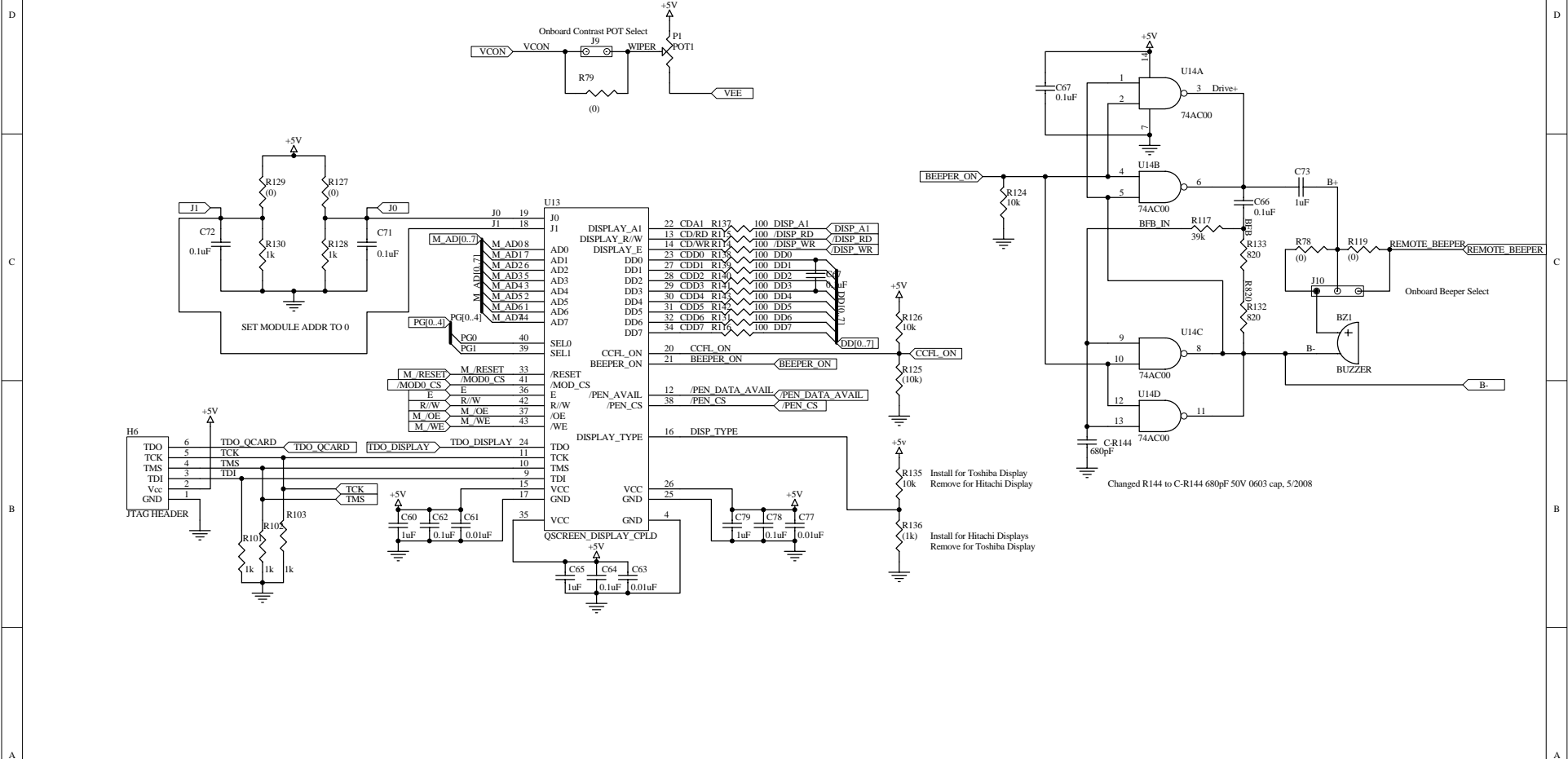


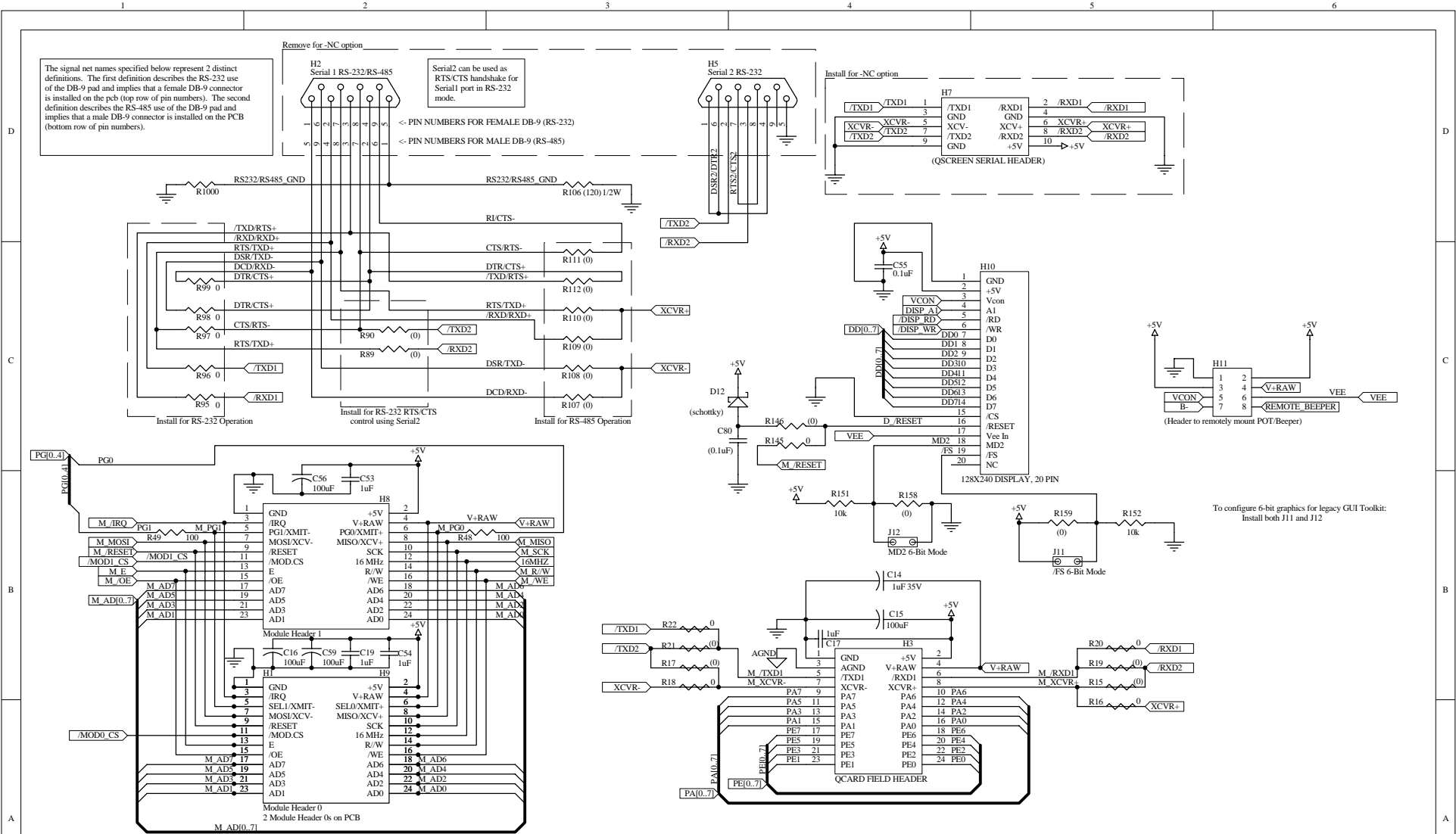


Title		
Project		
Size: A	Designer Michael Dorman	
File: Touch.Sch	Rev: 5	
Sheet 9 of 11	Date: 1-Mar-2010 17:53:34	
Mosaic Industries		









The signal net names specified below represent 2 distinct definitions. The first definition describes the RS-232 use of the DB-9 pad and implies that a female DB-9 connector is installed on the pcb (top row of pin numbers). The second definition describes the RS-485 use of the DB-9 pad and implies that a male DB-9 connector is installed on the PCB (bottom row of pin numbers).

Remove for -NC option

Serial2 can be used as RTS/CTS handshake for Serial1 port in RS-232 mode.

Install for -NC option

(QSCREEN SERIAL HEADER)

Install for RS-232 Operation

Install for RS-232 RTS/CTS control using Serial2

Install for RS-485 Operation

(Header to remotely mount POT/Beeper)

To configure 6-bit graphics for legacy GUI Toolkit:  
Install both J11 and J12

Note: Module Address 0 is used for the Display Interface

Title		<b>Headers</b>	
Project		QScreen Controller	
Size:	A	Designer	Michael Dorman
File:	headers.sch	Rev:	5
Sheet	11 of 11	Date:	1-Mar-2010 17:53:34

